



GPS93030U6-B Quick Installation Guide

● Installation & Getting Started :

Models	Procedure
GPS93030U6-B-USB GPS93030U6-B-MUSB	1. Install recommended PL-2303 USB-to-Serial Driver in yr PC , please visit www.yic.com.tw/prod/GPS_Receiver_G-Mouse.htm
	2. Connect device to USB port
	3. PC will designate a com port for device
GPS93030U6-B-RJ45	1. Connect device to the Host
GPS93030U6-B-E35	2. Host will designate a com port for device



※ LED : Blink while position fixed

● GPS Function Test :

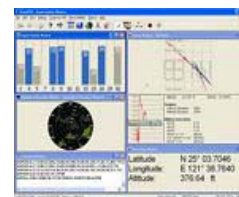
1. Please down Load VisualGPSInstall at www.yic.com.tw/prod/GPS_Receiver_G-Mouse.htm

2. Click 

3. Select com port of device & set band rate at 9600

4. Click "OK" & device will start to fix

※ 1st fix need around 30 second , also quick hot fix in 1 second



● Warranty :

GPS93030U6-B is warranted to be free from defect in materials & functions for one year from the date of purchase, this warranty does not cover failure due to abuse , misuse , accident , unauthorized alteration or repair , inappropriate disassemble.

E-mail : service@yic.com.tw

URL : www.yic.com.tw